

Cinema Plaza

Pepper Arts

James E. Pepper
Distillery

Water Tower Plaza

Central

Pavilion

Old Tarr
Distillery

Transportation Facility

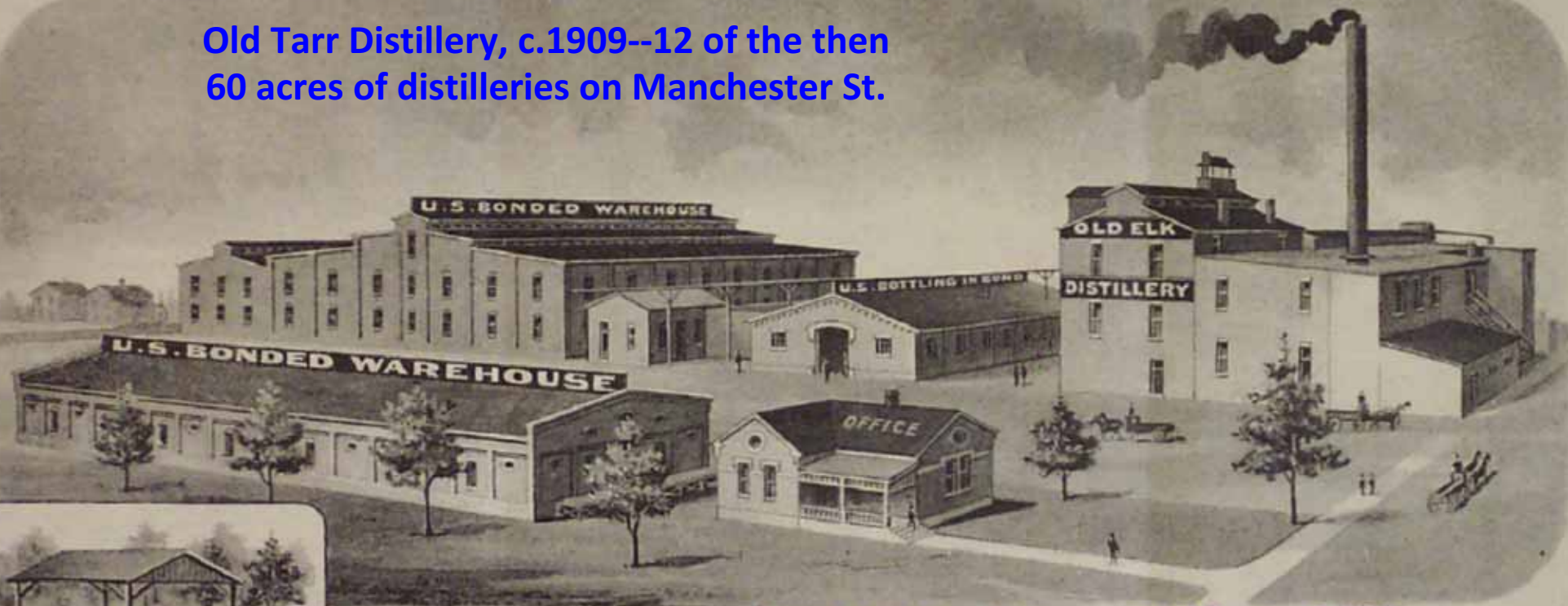
Rupp
Arena

**An Urban Redesign of the Historic Industrial Corridor of Manchester Street
--Lexington Downtown Development Authority &
University of Kentucky Atelier Design Studio**



**Manchester Street looking east
toward downtown and Civic Center**

Old Tarr Distillery, c.1909--12 of the then
60 acres of distilleries on Manchester St.

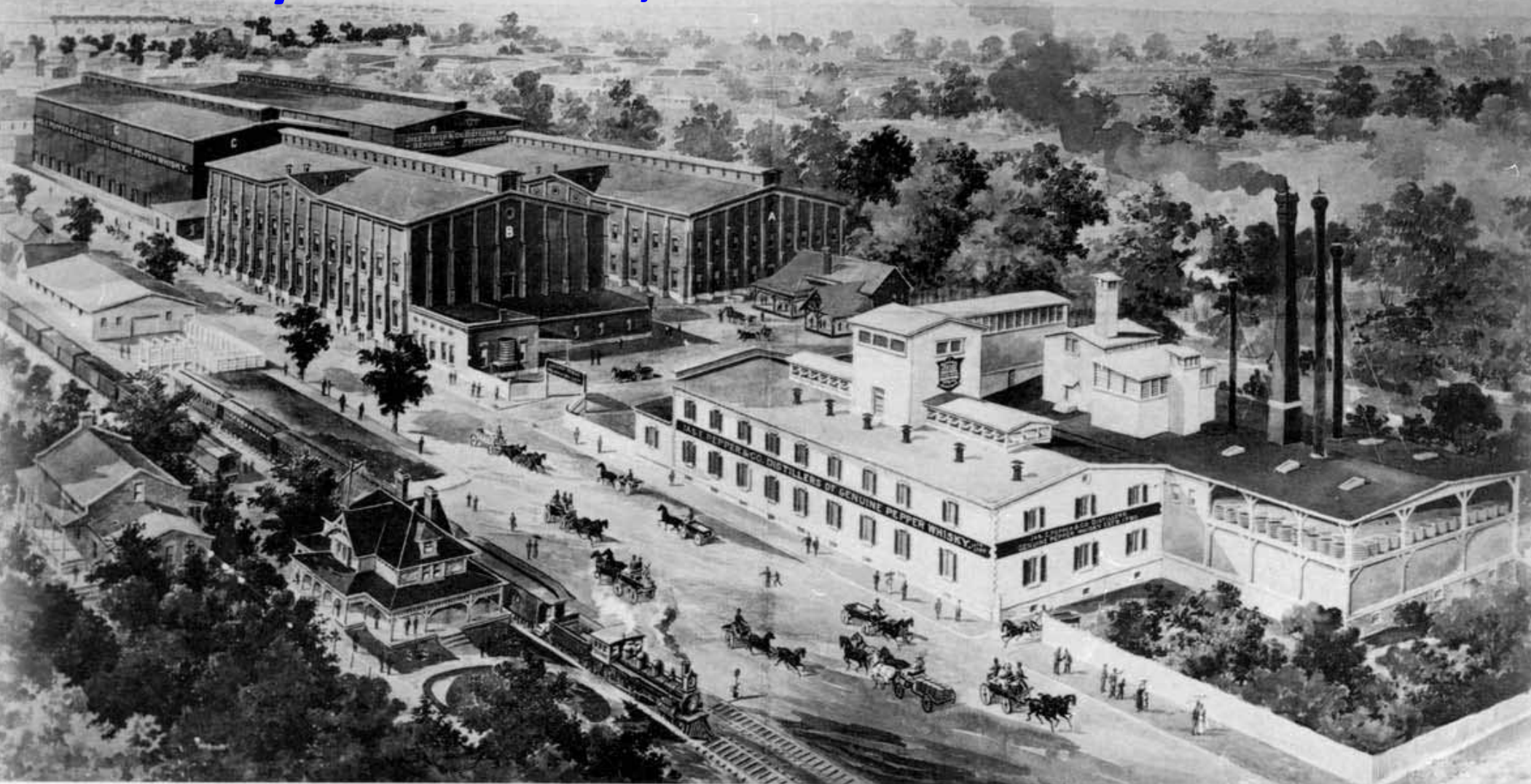


Lexington, K y., April 2, 1909.



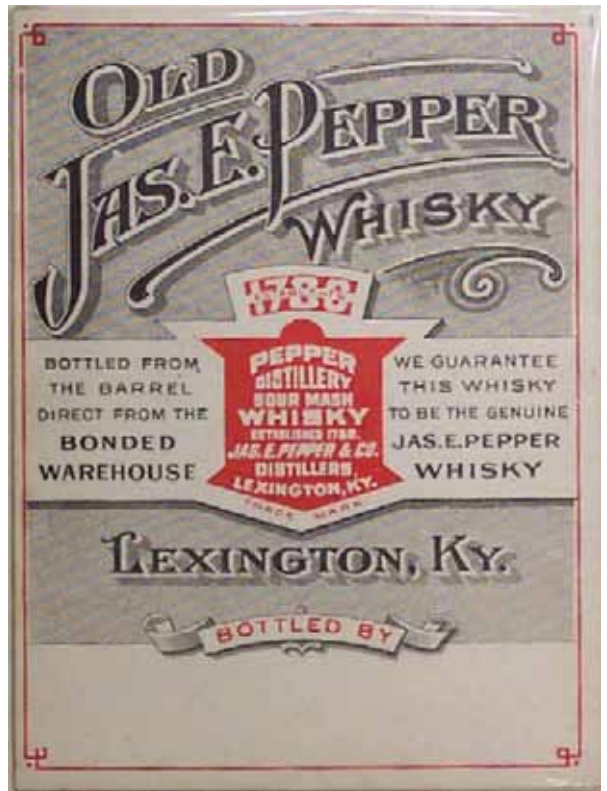
OLD ELK SPRING,
CAPACITY 475000 GALLONS PER DAY.

James E. Pepper Distillery, billed as largest distillery in the world, c.1898



Kentucky bourbons produced on Manchester Street






KENTUCKY
OLD
BELLE-^of
NELSON
BOURBON
WHISKEY
 VOLUME I PINT
BOTTLED IN BOND

BUCKEYE
 BRAND

WHISKEY-A BLEND
Jas E Pepper & Co.
 INCORPORATED
 LEXINGTON, KENTUCKY

BOTTLED
 IN BOND

 Old
Henry Clay
Whiskey
 BOTTLED BY
Jas E Pepper & Co.
 DISTILLERY No. 5 DIST. OF KY.
 LEXINGTON, KENTUCKY

OLD TIMES
WHISKEY

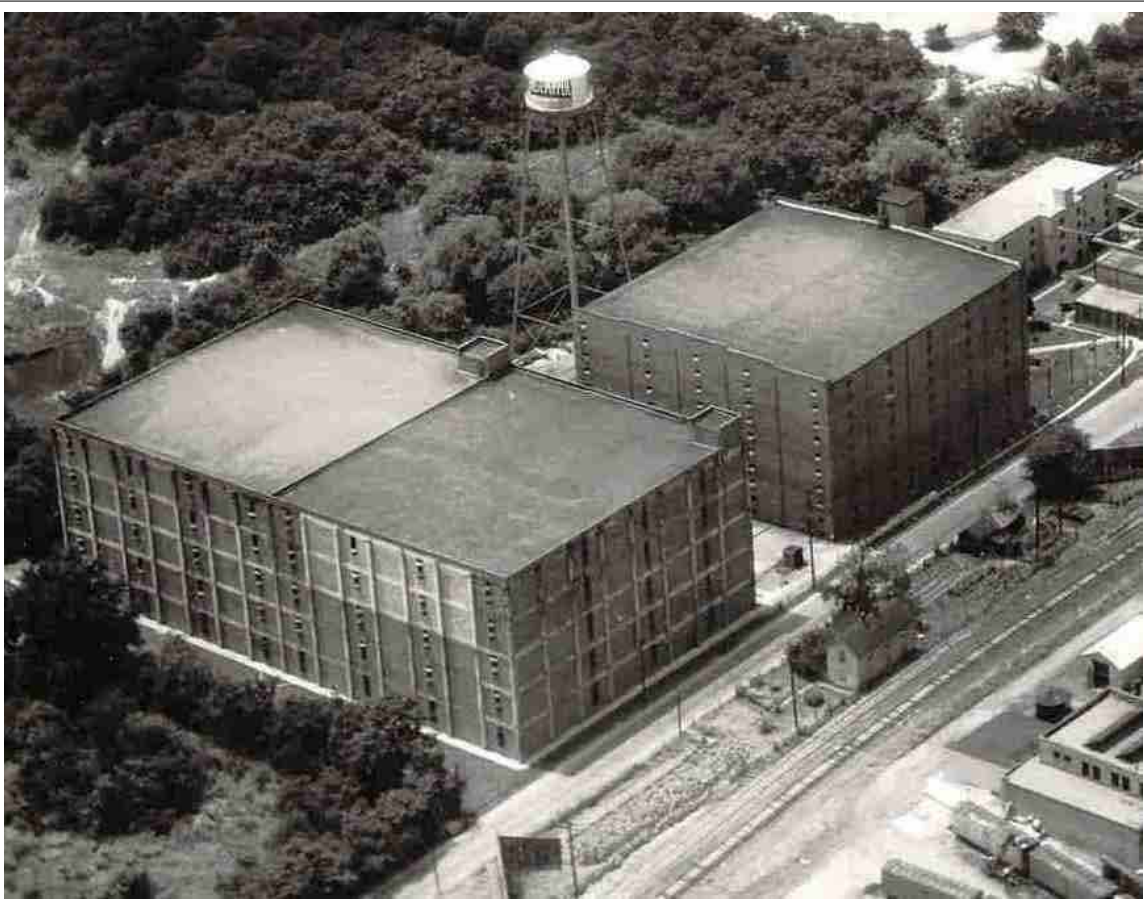
 JAS. E. PEPPER & CO.
 LEXINGTON, KENTUCKY

James E. Pepper bonded warehouse, 2007



Bonded warehouse, 1950's





Bonded warehouse, 1950's

James E. Pepper bonded warehouse, 2007



Bonded warehouse interior, c.1933



Interior of bonded warehouse today

Old Tarr Facade, 1968-2006



Old Tarr Facade 2007





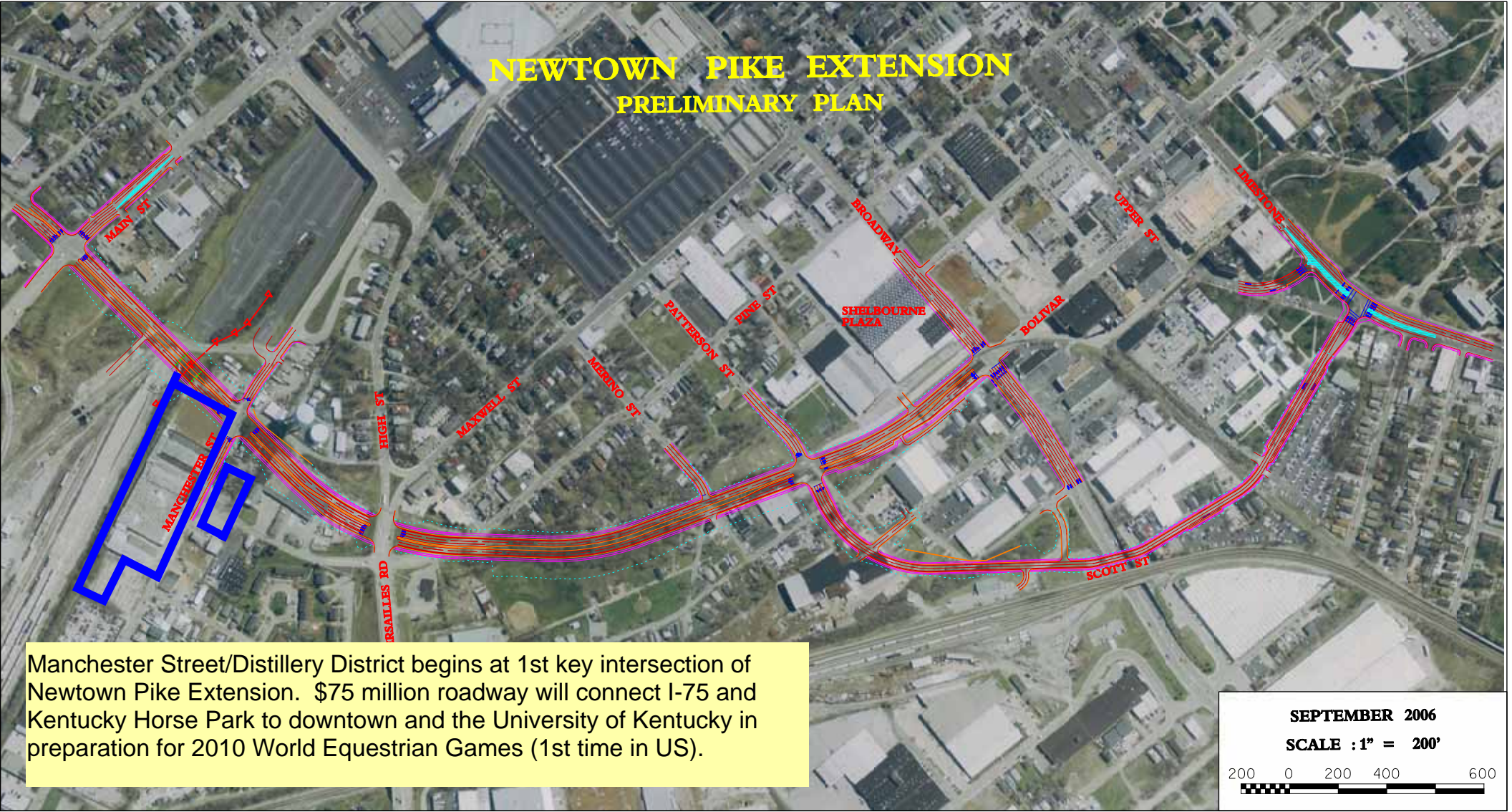
Old Tarr warehouse after space was donated to UK College of Design for it's annual Beaux Arts Ball. 2007 masquerade fundraiser at Tarr exceeded its best previous year by over 300%.



Intact Pepper elements, from kilns and 15000 pound grain scales to a working water tower and mash tubs.



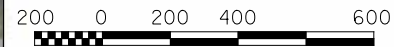
NEWTOWN PIKE EXTENSION PRELIMINARY PLAN



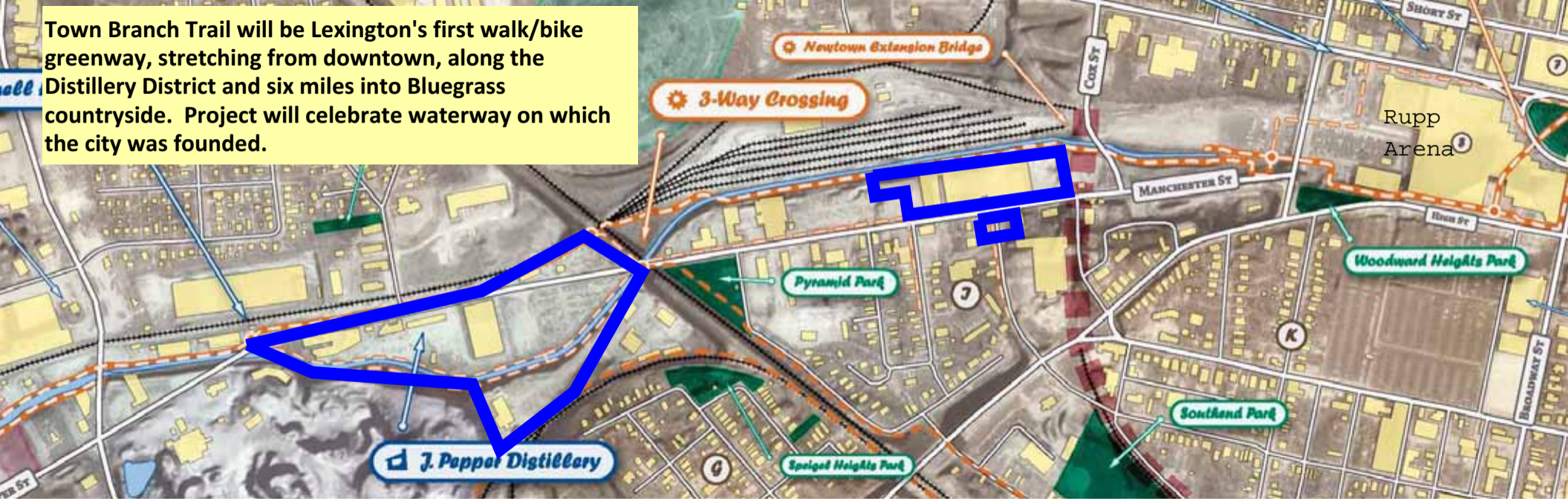
Manchester Street/Distillery District begins at 1st key intersection of Newtown Pike Extension. \$75 million roadway will connect I-75 and Kentucky Horse Park to downtown and the University of Kentucky in preparation for 2010 World Equestrian Games (1st time in US).

SEPTEMBER 2006

SCALE : 1" = 200'



Town Branch Trail will be Lexington's first walk/bike greenway, stretching from downtown, along the Distillery District and six miles into Bluegrass countryside. Project will celebrate waterway on which the city was founded.





Town Branch of the Elkhorn Creek as it runs along the south side of the Pepper properties.

Colonel Jim Pepper says:

As you travel through life, brother,
whatever be your goal...keep your eye
upon the doughnut, **and not upon the hole!**



Compliments of James E. Pepper & Company, Lexington, Kentucky